

Corner King

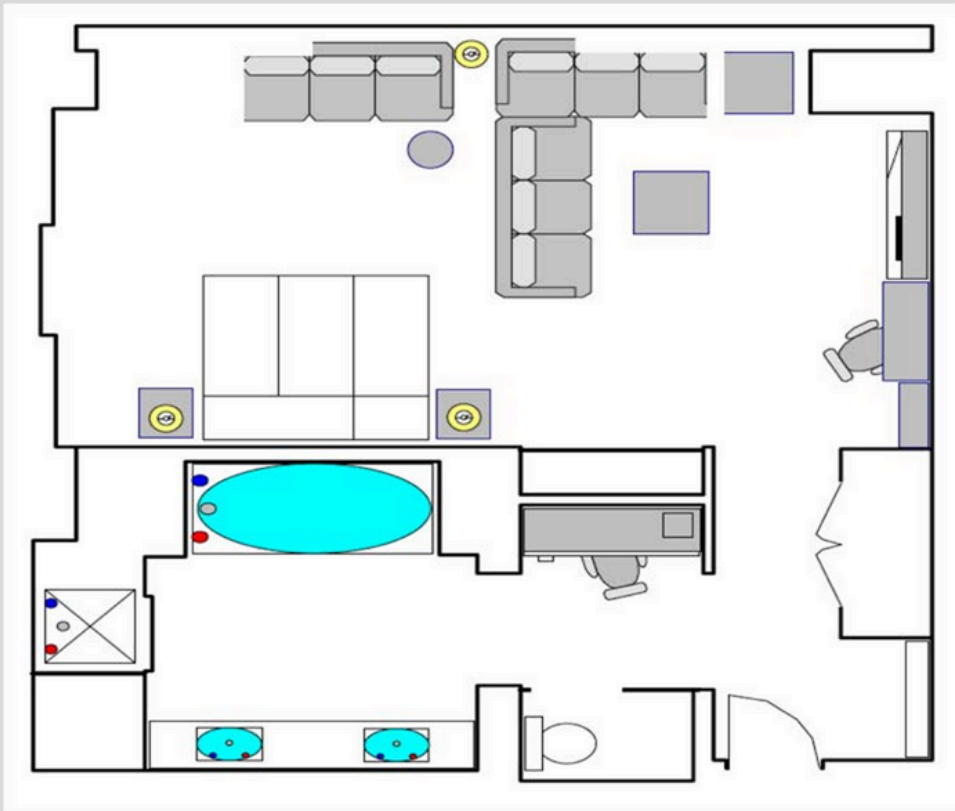
North Tower
422sq. ft.

Corner Kings are not available to be used for hospitality suites.

*Suite furnishings and floor plans are approximate and subject to change without notice.

 **HYATT REGENCY**[®]
MCCORMICK PLACE
CHICAGO

2233 S. DR. MARTIN LUTHER KING JR. DRIVE CHICAGO, IL 60616 | 312.567.1234 | MCCORMICKPLACE.HYATT.COM



Deluxe King

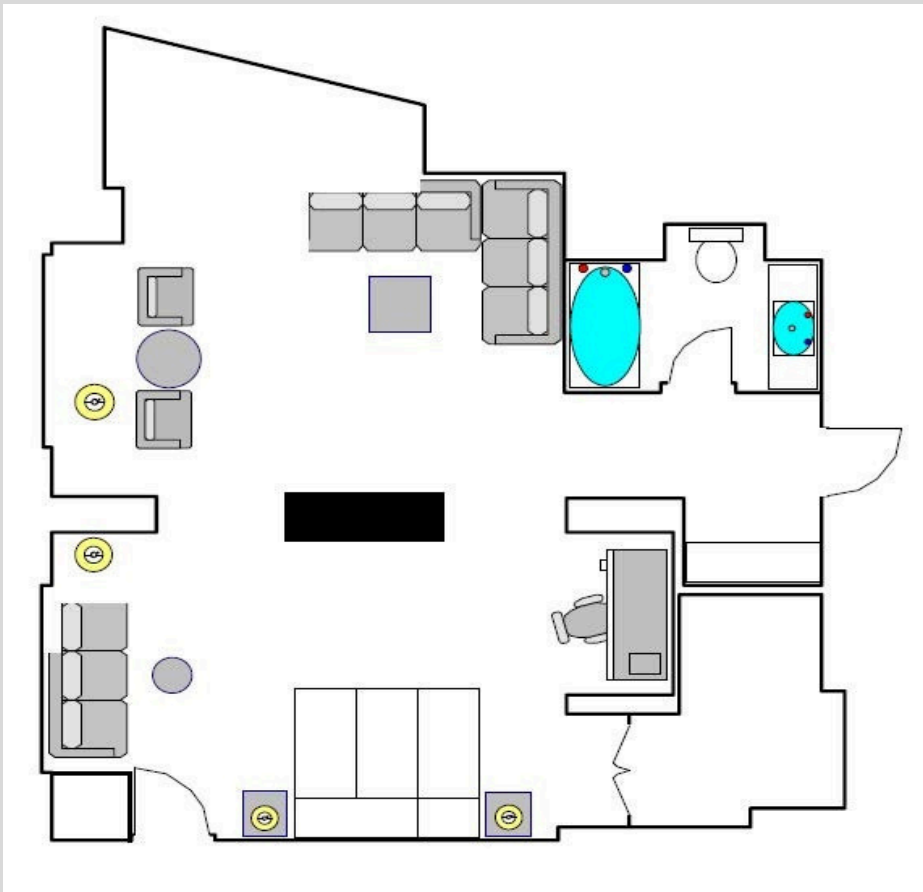
North Tower
462sq. ft.

Floor plans for Deluxe Kings vary, but amenities and total square footage are the same.

Deluxe Kings are not available to be used for hospitality suites.

*Suite furnishings and floor plans are approximate and subject to change without notice.



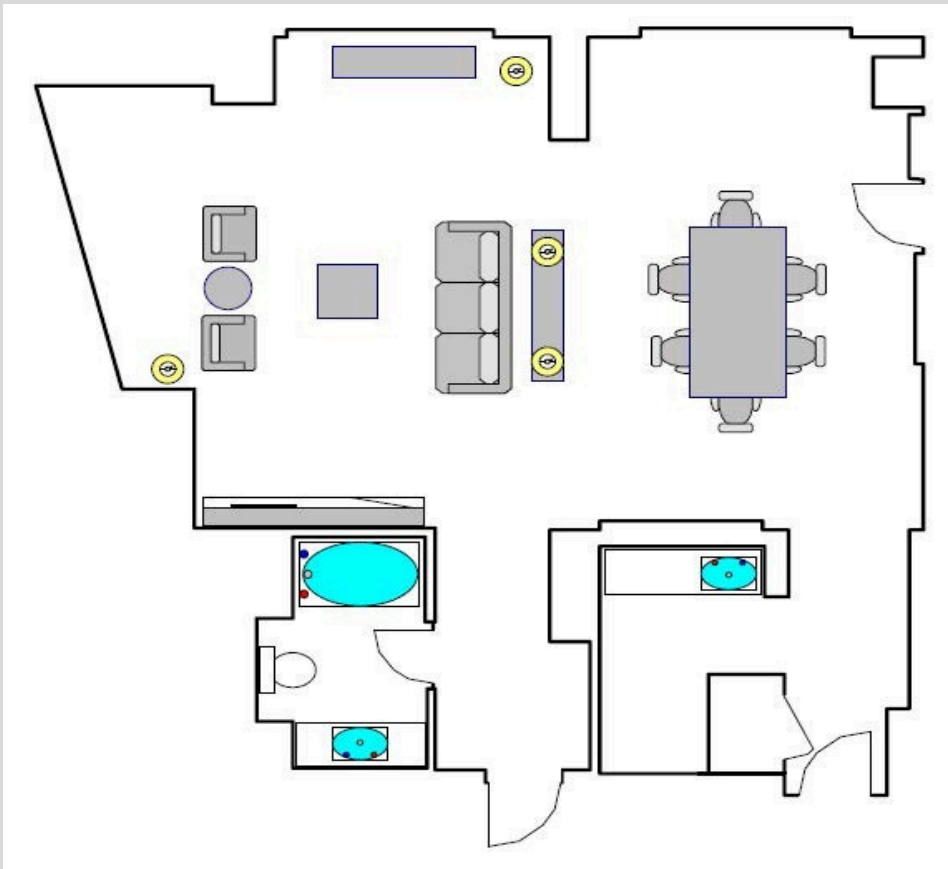


Executive Suite

34 Suites
South Tower
850 sq. ft.

*Suite furnishings and floor plans are approximate and subject to change without notice.





Skyline Suite

6 Suites

South Tower

Parlor: 760 sq. ft.

Connects to King Bedroom

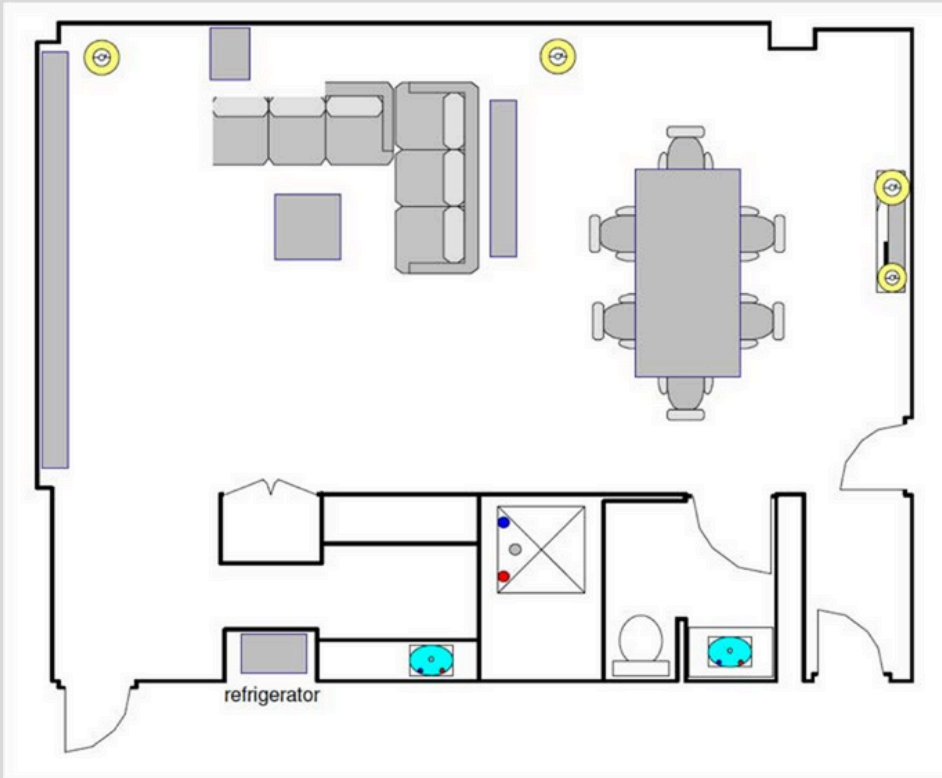
Total: 1,140 sq. ft.

*Suite furnishings and floor plans are approximate and subject to change without notice.



MCCORMICK PLACE
CHICAGO

2233 S. DR. MARTIN LUTHER KING JR. DRIVE CHICAGO, IL 60616 | 312.567.1234 | MCCORMICKPLACE.HYATT.COM



Regency Suite

4 Suites

South Tower Parlor: 760 sq. ft.

Connects to King Bedroom

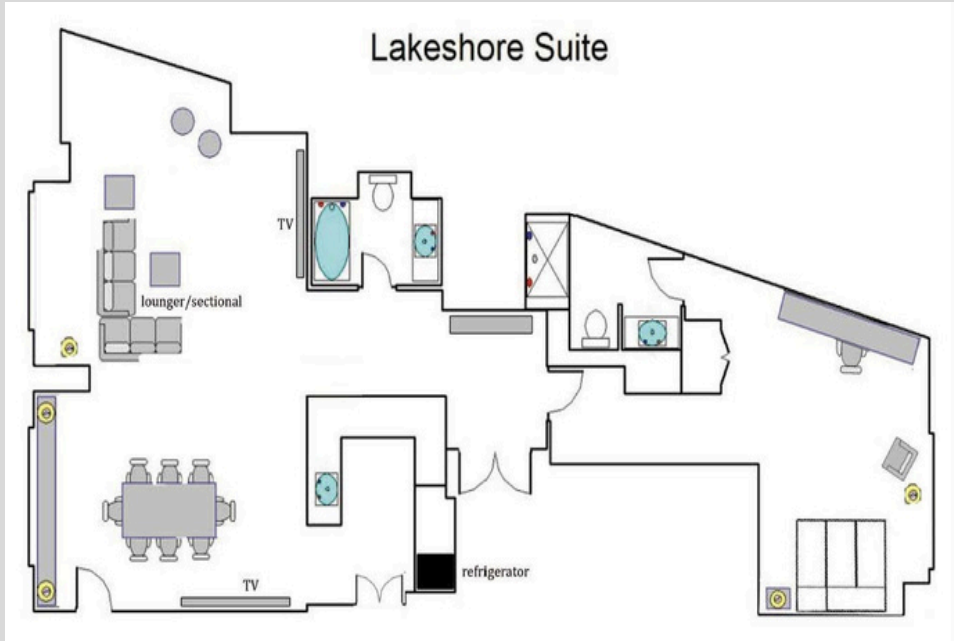
Total: 1,140 sq. ft.

*Suite furnishings and floor plans are approximate and subject to change without notice.



MCCORMICK PLACE
CHICAGO

2233 S. DR. MARTIN LUTHER KING JR. DRIVE CHICAGO, IL 60616 | 312.567.1234 | MCCORMICKPLACE.HYATT.COM



Lakeshore Suite

1 Suite
 South Tower
 Parlor: 970 sq. ft.
 Total: 1,350 sq. ft.

*Suite furnishings and floor plans are approximate and subject to change without notice.



MCCORMICK PLACE
 CHICAGO

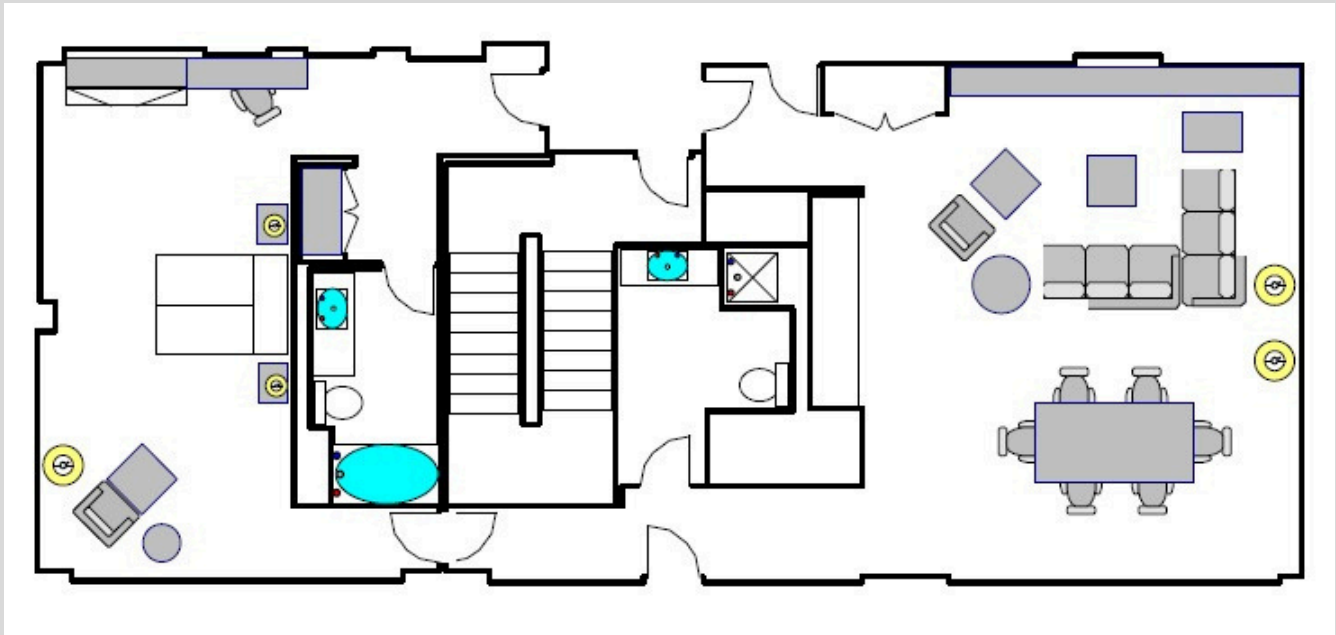
2233 S. DR. MARTIN LUTHER KING JR. DRIVE CHICAGO, IL 60616 | 312.567.1234 | MCCORMICKPLACE.HYATT.COM



Grand Suite

2 Suites
South Tower
Parlor: 975 sq. ft.
Total: 1,355 sq. ft.

*Suite furnishings and floor plans are approximate and subject to change without notice.



MCCORMICK PLACE
CHICAGO



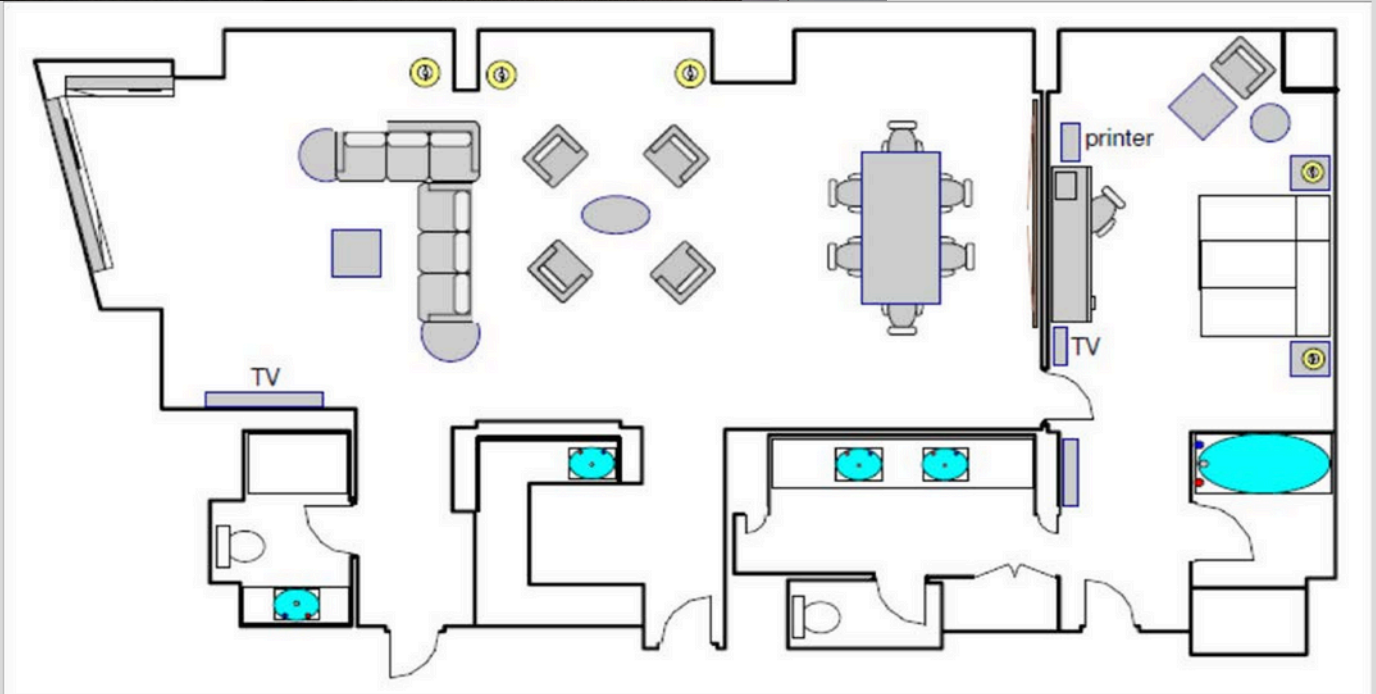
Presidential

2 Suites, South Tower

Parlor: 1,041 sq. ft.

Total: 1,571 sq. ft.

*Suite furnishings and floor plans are approximate and subject to change without notice.



HYATT REGENCY®

MCCORMICK PLACE
CHICAGO



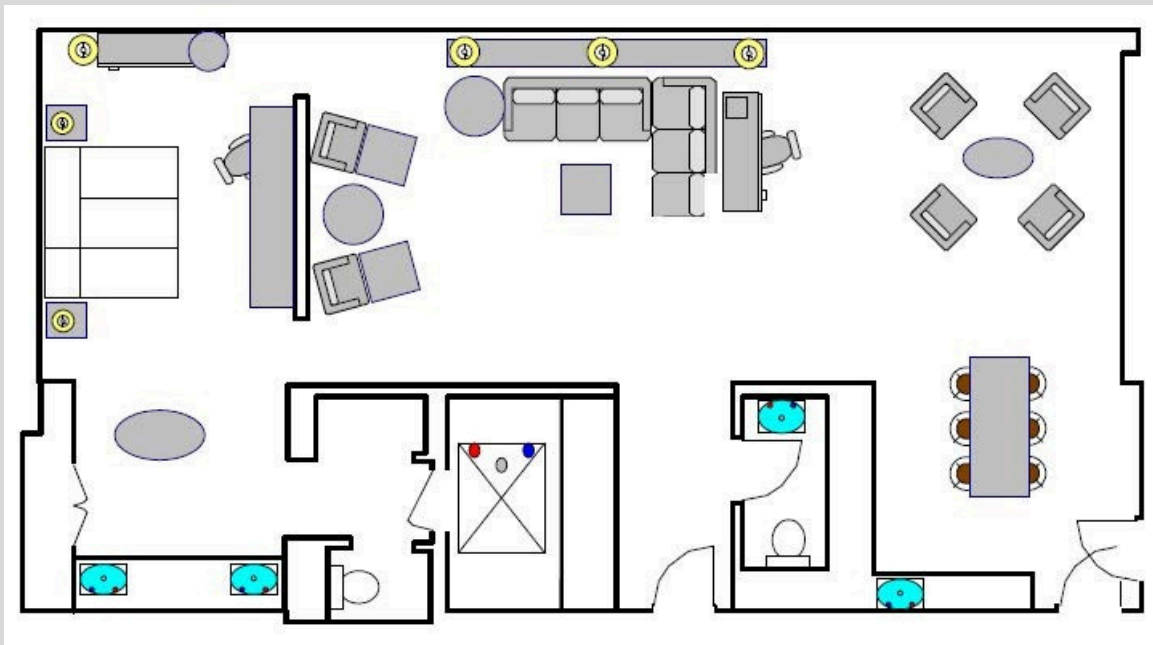
Park Suite

2 Suites

North Tower Total:

1,680 sq. ft.

*Suite furnishings and floor plans are approximate and subject to change without notice.



 **HYATT REGENCY®**

MCCORMICK PLACE
CHICAGO

2233 S. DR. MARTIN LUTHER KING JR. DRIVE CHICAGO, IL 60616 | 312.567.1234 | MCCORMICKPLACE.HYATT.COM